

## EXH-SF and EXH-S Technical Data

### Low Lift Pallet Trucks with Driver's Stand-on Platform

---

[EXH-SF 16C/Li-Ion](#)

[EXH-SF 20C/Li-Ion](#)

[EXH-SF 20/Li-Ion](#)

[EXH-SF 25/Li-Ion](#)

[EXH-S 20/Li-Ion](#)

[EXH-S 25/Li-Ion](#)

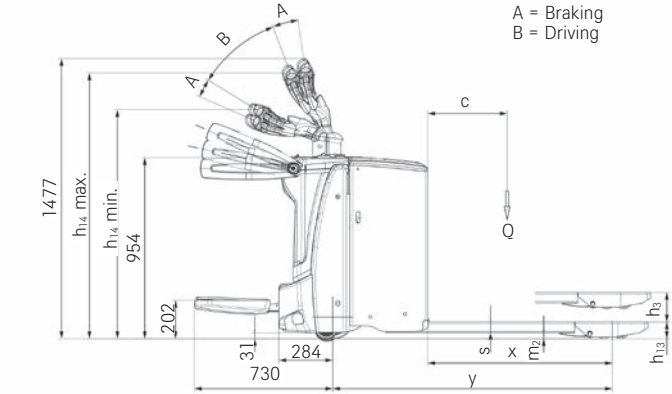




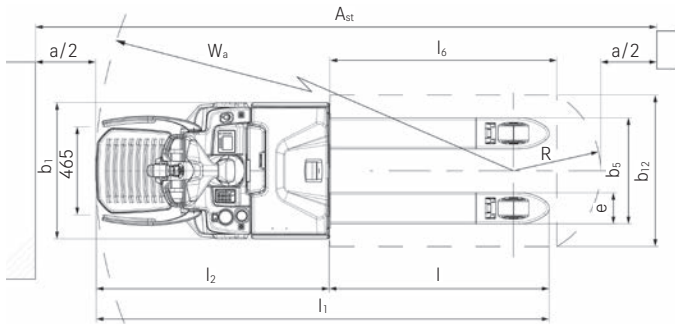
Features	1.1	Manufacturer			STILL	STILL	STILL	STILL	STILL	STILL
	1.2	Manufacturer's type designation			EXH-SF 16C/Li-Ion	EXH-SF 20C/Li-Ion	EXH-SF 20/Li-Ion	EXH-SF 25/Li-Ion	EXH-S 20/Li-Ion	EXH-S 25/Li-Ion
		Platform type			Hinged stand-on platform	Hinged stand-on platform	Hinged stand-on platform	Hinged stand-on platform	Rear access/backrest/side access	Rear access/backrest/side access
	1.3	Drive			Electric	Electric	Electric	Electric	Electric	Electric
	1.4	Operation			Standing/pedestrian	Standing/pedestrian	Standing/pedestrian	Standing/pedestrian	Standing	Standing
	1.5	Capacity/load	Q	kg	1600	2000	2000	2500	2000	2500
	1.6	Load centre distance	c	mm	600	600	600	600	600	600
	1.8	Load distance	x	mm	896 <sup>2</sup>	896 <sup>2</sup>	895 <sup>2</sup>	895 <sup>2</sup>	905 <sup>2</sup>	905 <sup>2</sup>
	1.9	Wheel base	y	mm	1230 <sup>2</sup>	1230 <sup>2</sup>	1408 <sup>2</sup>	1408 <sup>2</sup>	1408 <sup>2</sup>	1408 <sup>2</sup>
Weights	2.1	Service weight (incl. battery)		kg	563	563	875	875	870	870
	2.2	Axle load, laden	drive end/load end	kg	825/1338	920/1643	983/1920	983/1920	1175/1695	1288/2082
	2.3	Axle load, unladen	drive end/load end	kg	444/119	444/119	710/165	710/165	720/150	720/150
Tyres/chassis	3.1	Tyres			Polyurethane	Polyurethane	Polyurethane	Polyurethane	Polyurethane	Polyurethane
	3.2	Tyre size	drive end	mm	Ø 230 x 75	Ø 230 x 75	Ø 230 x 90	Ø 230 x 90	Ø 230 x 90	Ø 230 x 90
	3.3	Tyre size	load end	mm	Ø 85 x 105 (Ø 85 x 80) <sup>1</sup>	Ø 85 x 105 (Ø 85 x 80) <sup>1</sup>	Ø 85 x 110 (Ø 85 x 85) <sup>1</sup>	Ø 85 x 110 (Ø 85 x 85) <sup>1</sup>	Ø 85 x 110 (Ø 85 x 85) <sup>1</sup>	Ø 85 x 110 (Ø 85 x 85) <sup>1</sup>
	3.4	Support rollers	drive end	mm	2x Ø 125 x 40	2x Ø 125 x 40	2x Ø 125 x 60	2x Ø 125 x 60	2x Ø 125 x 60	2x Ø 125 x 60
	3.5	Number of wheels (x = driven)	drive end/load end		1x + 2/2 (1x + 2/4)	1x + 2/2 (1x + 2/4)	1x + 2/2 (1x + 2/4)	1x + 2/2 (1x + 2/4)	1x + 2/2 (1x + 2/4)	1x + 2/2 (1x + 2/4)
	3.6	Tread	drive end/load end	b <sub>10</sub> /b <sub>11</sub> mm	482/375	482/375	502/380	502/380	502/380	502/380
Dimensions	4.4	Lift	h <sub>3</sub>	mm	125	125	125	125	125	125
	4.8	Standing height (platform)	h <sub>7</sub>	mm	162	162	220	220	220	220
	4.9	Tiller handle height in driving position	min./max. h <sub>14</sub>	mm	1121/1276	1121/1276	1210/1440	1210/1440	1030/1115	1030/1115
	4.15	Fork height, lowered	h <sub>13</sub>	mm	86	86	86	86	86	86
	4.19	Overall length	platform closed/open l <sub>1</sub>	mm	1777/2109	1777/2109	1957/2395 <sup>4</sup>	1957/2395 <sup>4</sup>	2320 <sup>5, 6</sup>	2320 <sup>5, 6</sup>
	4.20	Length including fork backs	platform closed/open l <sub>2</sub>	mm	620/952	620/952	800/1238 <sup>4</sup>	800/1238 <sup>4</sup>	1170 <sup>5, 6</sup>	1170 <sup>5, 6</sup>
	4.21	Total width	b <sub>1</sub>	mm	720	720	720	720	720	720
	4.22	Fork dimensions DIN ISO 2331	s/e/l	mm	55/165/1150	55/165/1150	55/165/1150	55/165/1150	55/165/1150	55/165/1150
	4.25	Overall fork width	b <sub>5</sub>	mm	560	560	560	560	560	560
	4.32	Ground clearance, centre of wheel base	m <sub>2</sub>	mm	32	32	30	30	35	35
	4.34	Working aisle width with 800 x 1200 pallet lengthways	platform open A <sub>st3</sub>	mm	2550 <sup>2, 8</sup>	2550 <sup>2, 8</sup>	2844 <sup>2, 4</sup>	2844 <sup>2, 4</sup>	2793 <sup>2, 4</sup>	2793 <sup>2, 4</sup>
	4.34.1	Working aisle width with 1000 x 1200 pallet crossways	platform open A <sub>st</sub>	mm	2646 <sup>2, 8</sup>	2646 <sup>2, 8</sup>	2926 <sup>2, 4</sup>	2926 <sup>2, 4</sup>	2876 <sup>2, 4</sup>	2876 <sup>2, 4</sup>
	4.35	Turning radius	platform open W <sub>a</sub>	mm	1843 <sup>2, 8</sup>	1843 <sup>2, 8</sup>	2140 <sup>2, 4</sup>	1700/2140 <sup>2, 4</sup>	2095 <sup>2, 5, 7</sup>	2095 <sup>2, 5, 7</sup>
	5.1	Travel speed	laden/unladen	km/h	6/6 (8.5/8.5) <sup>3</sup>	6/6 (8.5/8.5) <sup>3</sup>	6/6 (8/8, 10/10) <sup>3</sup>	10/12 (10/14) <sup>3</sup>	8/8 (10/12) <sup>3</sup>	10/12 (10/14) <sup>3</sup>
	5.2	Lifting speed	laden/unladen	m/s	0.037/0.042	0.033/0.042	0.05/0.06	0.05/0.06	0.036/0.046	0.028/0.036
Performance	5.3	Lowering speed	laden/unladen	m/s	0.070/0.065	0.070/0.069	0.1/0.08	0.1/0.08	0.09/0.089	0.066/0.072
	5.8	Max. gradeability	laden/unladen	%	15/20	13/20	12/20	12/20	13/20	11/20
	5.10	Service brake			Electromagnetic	Electromagnetic	Electromagnetic	Electromagnetic	Electromagnetic	Electromagnetic
Electric engine	6.1	Drive motor, rating S2 60 min		kW	1.3	1.3	2.3	3.0	2.3	3.0
	6.2	Lift motor, rating at S3 15%		kW	1.2	1.2	1.2	2.2	1.2	1.5
	6.3	Battery according to DIN 43531/35/36; A, B, C, no			British Standard	British Standard	DIN 43535 3PzS	DIN 43535 3PzS	DIN 43535 3PzS	DIN 43535 3PzS
	6.4	Battery voltage/nominal capacity K <sub>s</sub>		V/Ah	24/150	24/150	24/375	24/375	24/375 // Li-Ion 24/410	24/375 // Li-Ion 24/410
	6.5	Battery weight ±5 % (depending on make)		kg	140	140	290	290	290	290
	6.6	Energy consumption according to VDI cycle		kWh/h	0.251	0.289	0.45	0.5 (0.56) <sup>3</sup>	0.43	0.51
Misc.	8.1	Drive control			AC control	AC control	AC control	AC control	AC control	AC control
	8.4	Sound level at driver's ear		dB(A)	65	65	62	62	69	69

<sup>1</sup> With tandem load rollers
<sup>2</sup> Initial lift raised; initial lift lowered +70 mm
<sup>3</sup> With Power Plus
<sup>4</sup> With 4PzS/400-500-Ah battery +75 mm; with 2PzS/250-Ah battery -75 mm
<sup>5</sup> For compartment 70: +75 mm for 4PzS, +150 mm for 5PzS

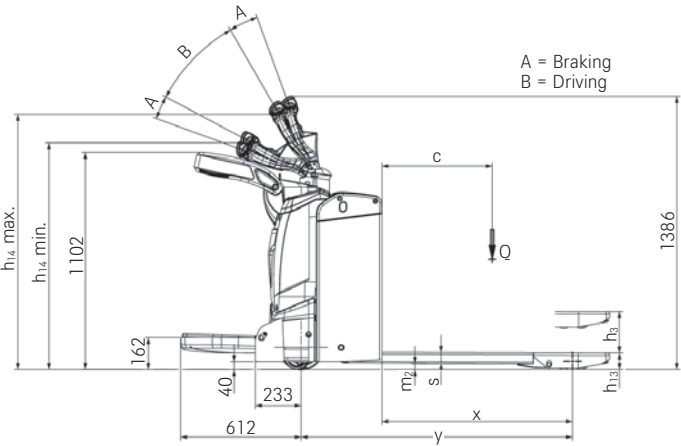
<sup>6</sup> +75 mm for backrest/side access
<sup>7</sup> +55 mm for backrest/side access
<sup>8</sup> +75 mm 2PzS



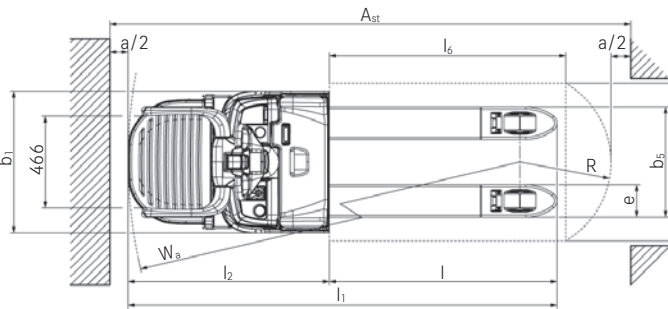
Side view EXH-SF



Top view EXH-SF

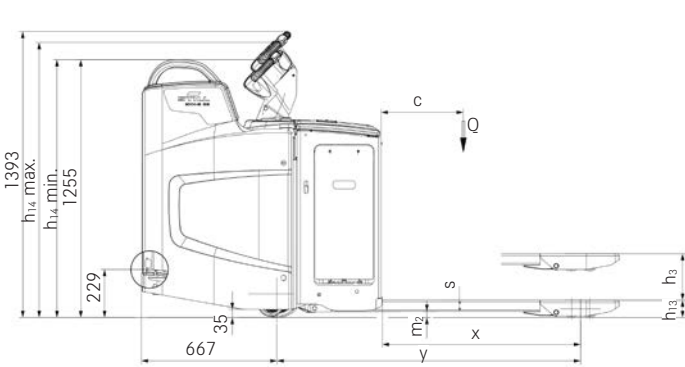


Side view EXH-SF 16C/20C

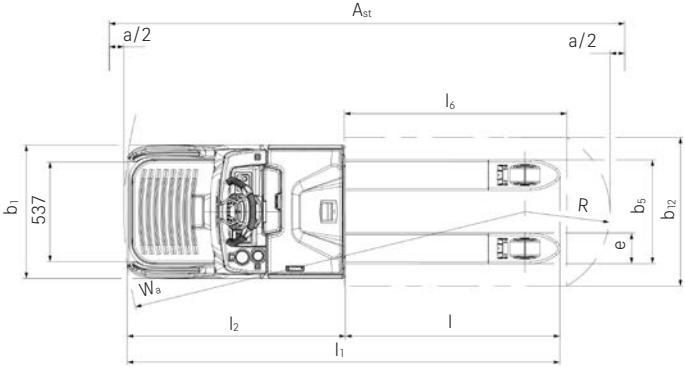


Top view EXH-SF 16C/20C

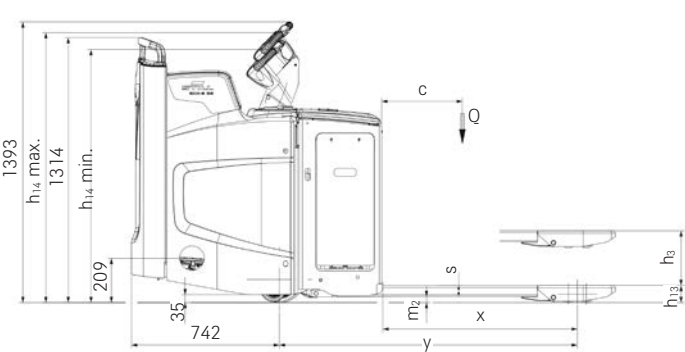
# EXH-S Low Lift Pallet Truck with Driver's Stand-on Platform Technical Drawings



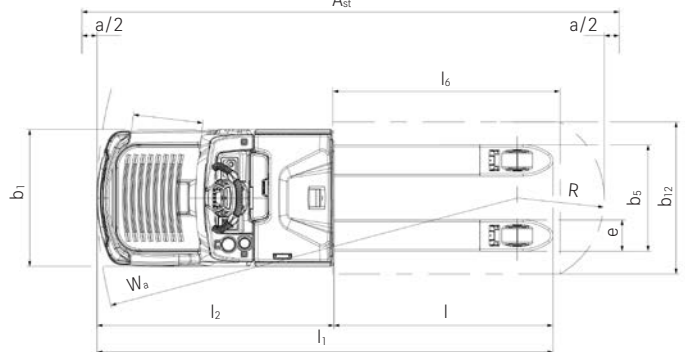
Side view rear entry EXH-S



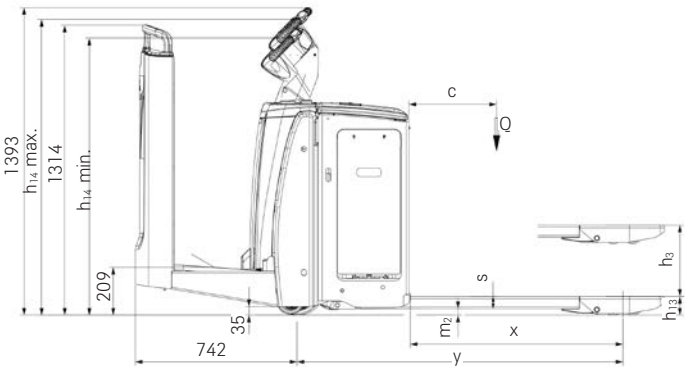
Top view rear entry EXH-S



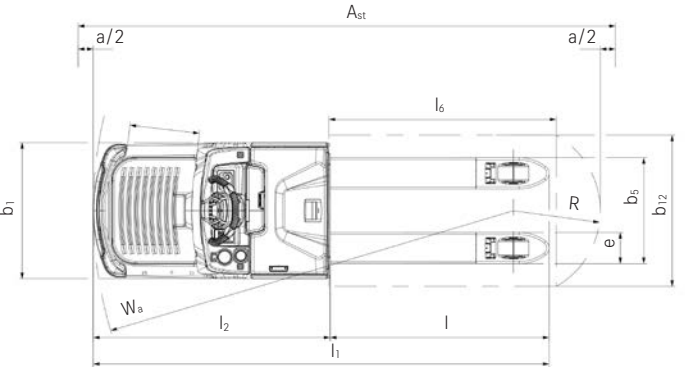
Side view side entry EXH-S



Top view side entry EXH-S



Side view backrest EXH-S



Top view backrest EXH-S

## EXH-SF 16C/20C Low Lift Pallet Trucks with Driver's Stand-on Platform

### Detailed Photos



Easy to operate thanks to the ergonomic and intuitive STILL tiller arm



Everything in view at all times: The smart LED or touch display clearly shows all relevant vehicle information



Maximum manoeuvrability even in tight spaces: Made possible by the compact vehicle dimensions



Safe and ergonomic position on the platform thanks to the optional folding side bars



Productive and safe right up to the last minute: STILL electric steering enables fatigue-free working throughout the entire shift



The mechanically suspended stand-on platform provides ergonomic suspension and simultaneously increases the handling capacity



If you opt for the optional built-in charger, you can charge where and whenever you need to



For even more productivity in horizontal goods transport, the EXH-SF 16C/20C is optionally available with 2,400 mm forks



## EXH-SF Low Lift Pallet Truck with Driver's Stand-on Platform

### Detailed Photos



Up to 2,500 kg lifting capacity and an impressive top speed of 14 km/h



Pneumatically cushioned stand-on platform for an optimal shock absorption on uneven floors



The flexibly adjustable working angle of 83° enables an ergonomic working posture of the tiller - and that for operators of any height



The colour display with language-independent symbols shows all of the important functions at a glance



Optimum view of the fork tips allows a high and safe handling performance



Increased operational hours thanks to fast interim charging with optional STILL Li-ion technology



Safe support on both sides for operators of any height thanks to the height-adjustable side bars



Air-suspended stand-on platform continuously adjustable thanks to the integrated compressor

## EXH-S Low Lift Pallet Truck with Driver's Stand-on Platform

### Detailed Photos



Powerful on ramps: slanted chassis design enables powerful driving on ramps



A variety of access options and a stand-on platform cushioning that can be adjusted by rocker switch (+/-)



The right platform variant for any application – whether loading and unloading lorries, horizontal transport or order picking applications



Maximum vehicle availability through lateral battery change or lithium-ion technology suitable for interim charging



Simultaneous driving and lifting with the optional STILL Easy Move paddle shifters



Thanks to the height-adjustable STILL Easy Drive steering wheel, all functions can be operated with ergonomic controls by right- and left-handed operators without changing grip



Excellent safety at work at maximum handling capacity thanks to the robust side walls and a top travel speed of 14 km/h



Continuous cushioning of the air-suspended stand-on platform thanks to the integrated compressor

## EXH-SF Low Lift Pallet Trucks with Driver's Stand-on Platform Swift and Compact

Intuitive operation of the vehicle thanks to the innovative STILL tiller with integrated LED or touch display on the tiller head

Outstanding manoeuvrability thanks to compact vehicle dimensions and an overall width of only 720 millimetres

Safe position on the platform even when cornering thanks to Curve Speed Control and stable side bars



### EXH-SF 16C/20C

Manoeuvrability and intuitive operation taken to a new dimension – the EXH-SF 16C/20C low lift pallet truck with folding stand-on platform is the smart assistant for light to medium duty horizontal transport operations. With its impressively slim dimensions, the pallet truck is very easy to manoeuvre when loading and unloading HGVs and can be operated with precision thanks to the electric steering and the innovative STILL tiller. The innovative STILL LED or touch display integrated in the tiller head provides even more working ergonomics and an excellent overview of all relevant truck data.

For maximum safety and increased handling performance at the same time, the EXH-SF 16C/20C features the STILL Curve Speed Control driver assistance system as standard, which automatically adjusts the speed when cornering. Sturdy side bars and a generously dimensioned sprung stand-on platform ensure safety and comfort during operation. The innovative STILL lithium-ion technology enables fast charging and interim charging of the battery during breaks, which ensures maximum availability of the smart warehouse assistant. In addition, different battery sizes are available to suit your individual requirements.

Superb handling performance: a top speed of 14 km/h and a maximum lifting capacity of 2,500 kg

Back-friendly: air-cushioned stand-on platform adjustable to individual weight with adjustable side arms

Powerful driving on ramps: hydraulically sprung support wheels for best traction



### EXH-SF

Speed, ergonomics, compact design – the EXH-SF pallet truck with a hinged stand-on platform is the perfect combination of all these qualities. With a maximum lifting capacity of 2,500 kg and an impressive top speed of 14 km/h, the EXH-SF demonstrates superior handling power. The air-cushioned stand-on platform with integrated compressor keeps work back-friendly at all times. Due to its sprung support wheels the smart warehouse organiser crosses ramps comfortably, safely and with optimum traction. Furthermore, the

EXH-SF helps to save valuable warehouse space: with a total width of just 720 mm, the pallet truck is narrower than a Europallet and can be manoeuvred precisely through the narrowest of aisles. Do you need a pallet truck that is operational 24 hours a day? With the STILL Li-ion technology, even the shortest breaks are sufficient to charge the EXH-SF. As different battery sizes are available depending on your individual needs, any customer requirement as well as multi-shift operations can be realised.



## EXH-S Low Lift Pallet Truck with Driver's Stand-on Platform Speeds things up. Safely.

Ergonomic back protection thanks to individually adjustable air-cushioned driver's stand-on platform

High and flexible handling capacity: a maximum speed of 14 km/h and a lifting capacity of 2,500 kg

Safe handling in confined spaces thanks to a chassis that is only 720 mm wide

Intuitive operating concept: height-adjustable STILL Easy Drive steering wheel provides easy-access control without having to change grip



### EXH-S

Efficient performance, safe and convenient operation, reliable flexibility – the EXH-S pallet truck combines all of these features to perfection. With a maximum lifting capacity of 2,500 kg, a swift top speed of 14 km/h and the ability to move two pallets at once thanks to the extra-long forks, the EXH-S features unrivalled performance. Thanks to the intuitive operating concept, you can rely on the height-adjustable STILL Easy Drive steering wheel with integrated display and rocker switches at all times. This feature ensures that left- and right-handed operators always have full control of all functions, without having

to change grip. The optional, individually adjustable, air-cushioned stand-on platform also provides optimal protection for the operator's back, even in the toughest applications. Speaking of applications, the EXH-S equips you for any storage situation and ensures you benefit from flexibility when it comes to configuration variants. All truck variants have an ultra-robust chassis. This provides extra protection for demanding ramp applications, for example. Those who choose the lithium-ion variant as an option can interim charge the battery at any time and benefit from maximum flexibility.







### Simply easy

- Smooth steering and intuitive operation of all functions for left- and right-handed operators with STILL Easy Drive steering wheel on the EXH-S
- Easy access and optimal protection for the operator's back and joints: low access point and adjustable, air-cushioned stand-on platform with integrated compressor (EXH-S and EXH-SF) available as an option
- Optional built-in charger for decentralised charging at any power socket
- Optimal utilisation of storage space: compact dimensions and high manoeuvrability facilitate narrow working aisles
- A high level of comfort and excellent driving on any surface: the stand-on platform is mechanically or pneumatically suspended, depending on the intended use



### Simply powerful

- Fast goods handling: up to 2,500 kg lifting capacity and an optional maximum speed of 14 km/h for the EXH-S 25
- Built for continuous operation: reliable and low-maintenance drive
- Swift, safe movement on ramps: high-powered drive and lift motor and 5-wheel chassis with sprung support wheels
- Instant charging: lithium-ion model achieves 50 percent charge level in only 30 minutes and is fully charged in only 90 minutes
- Designed to handle even the toughest applications: robust, durable chassis made from solid steel



### Simply safe

- Simply work with precision thanks to unobstructed field of vision: good view of the fork tips and centrally mounted tiller
- Accidental roll-back impossible: automatic stop function even on ramps
- Fast and safe cornering: Curve Speed Control automatically adapts speed to the steering angle when cornering
- Only moves off once the operator is standing safely: optional foot sensor determines whether the feet are within the truck's contour (EXH-S)
- Safe load handling in confined spaces thanks to compact dimensions



### Simply flexible

- Suitable driving programmes for any application, from maximum handling power to optimal efficiency: ECO, BOOST or Blue-Q
- Ready for use at all times: battery capacities up to 500 Ah and optional STILL lithium-ion battery for round-the-clock availability
- Decentralised and flexible charging at any power socket with the optional built-in charger
- Flexibly configurable driver's cab for various main applications, from frequent ramp driving through to long transport distances: rear access, side access or backrest on the EXH-S



### Simply connected

- Versatile, flexible access control with FleetManager 4.x
- Fast service analysis and parametrisation of settings thanks to CAN bus interface
- Easy integration into material flow management system thanks to MMS provision



## EXH-SF and EXH-S Low Lift Pallet Trucks with Driver's Stand-on Platform Equipment Variants



		EXH-SF 16C/20C	EXH-SF 20	EXH-SF 25	EXH-S 20	EXH-S 25
General	Integrated storage options	●	●	●	●	●
	Control element assembly suitable for both left and right-handed operators	●	●	●	●	●
	LED-battery status display and operating hours meter	—	○	○	○	○
	Colour display and control unit for selecting the driving programme, including Blue-Q	—	●	●	—	—
	Display integrated in the tiller head (LED or touch display)	●	—	—	—	—
	Cold storage version	○	○	○	○	○
	Powerful three phase drive motor for very low maintenance costs	●	●	●	●	●
	Side protection bars	○	○	●	—	—
	Side protection panel	—	—	—	●	●
	Accessories bracket on the drive side	○	○	○	○	○
	Hinged platform	●	●	●	—	—
	Mechanically sprung stand-on platform	●	●	—	●	—
	Air-sprung stand-on platform	—	○	●	○	●
	Air-sprung stand-on platform with built-in compressor for suspension adjustment	—	○	○	○	○
	Initial lift	●	●	●	●	●
	Creep speed button	●	—	—	—	—
	Adjustable DIN-A4 writing pad	○	○	○	○	○
	Prepared for Material Management System (MMS) and data transfer	○	○	○	○	○
Tyres	Drive wheel tyres, polyurethane	●	●	●	●	●
	Drive wheel tyres, polyurethane, profiled	○	○	○	○	○
	Drive wheel tyres, solid rubber	○	○	○	○	○
	Drive wheel tyres, solid rubber, profiled	○	○	○	○	○
	Load roller tyres, polyurethane, single	●	●	●	●	●
	Load roller tyres, polyurethane, tandem	○	○	○	○	○
Safety	Access authorisation (key)	●	●	●	●	●
	Access authorisation (digicode)	○	○	○	○	○
	FleetManager: access authorisation, shock detection, reports	○	○	○	○	○
	Curve Speed Control: speed reduction when driving around corners	—	●	●	●	●
	STILL Combi tiller: variable tiller length for an adequate distance between driver and equipment	—	○	○	—	—
	Headlights	○	○	○	○	○
	STILL Safety Light	○	○	○	○	○
Battery	Load backrest	○	○	○	○	○
	Sheet steel battery cover	●	●	●	●	●
	Battery compartment for battery up to 250 Ah, for changing batteries with a crane	●	○	○	—	—
	Battery compartment for 300-375 Ah battery, for changing batteries with a crane	—	●	●	●	●
	Battery compartment for 400-500 Ah battery, for changing batteries with a crane	—	○	○	○	○
	Battery compartment for battery up to 250 Ah, for changing batteries with a roller track and changing frame	—	○	○	—	—
	Battery compartment for 300-375 Ah battery, for changing batteries with a roller track and changing frame	—	○	○	○	○
	Battery compartment for 400-500 Ah battery, for changing batteries with a roller track and changing frame	—	○	○	○	○
	Battery compartment for battery up to 620 Ah, for changing batteries using a roller track and changing frame	—	—	—	○	○
	STILL Li-Ion battery of up to 6 kWh	○	○	○	○	○
	STILL Li-Ion battery of up to 14 kWh	—	○	○	○	○
	Built-in charger for Li-ion battery and lead-acid battery	○	○	○	○	○

● Standard ○ Option — Not available



EXH-SF



#### **Matriz San Luis Potosí**

Carretera Federal 57 Km183 #950 C.P. 78420,  
San Luis Potosí. S.L.P.  
Tel: 444 738 01 07 al 10



#### **Sucursales y puntos de servicio y venta**

- Guadalajara, Jal.
- Toluca, Edo Mex.
- Monterrey, N.L.
- Aguascalientes, Ags.
- Puebla, Pue.
- Querétaro, Qro.
- Celaya, Gto.
- Silao / Irapuato / León
- Saltillo Coah.
- Tlalnepantla, Edo. Mex.
- San José Chiapa, Pue.
- Lagos de Moreno.
- Matehuala, SLP.
- San Miguel Allende, Gto.
- Cuautitlán Izcalli, Edo Mex.

[info@still.de](mailto:info@still.de)

STILL is certified in the following  
areas: Quality management,  
occupational safety environmental  
protection and energy management



**first in intralogistics**



[www.interpricelogistica.com](http://www.interpricelogistica.com)



[info@interpricelogistica.com](mailto:info@interpricelogistica.com)